

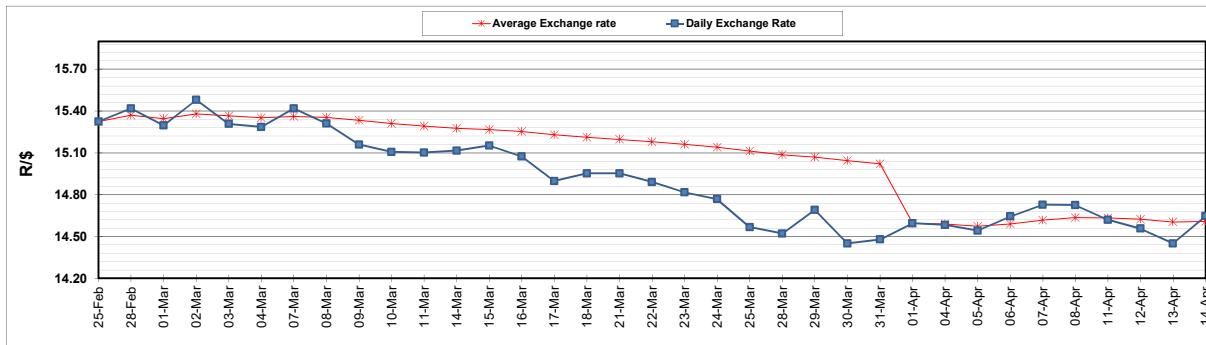
	PETROL 95 ULP	PETROL 93 ULP & LRP	DIESEL 0.05%	DIESEL 0.005%	ILL. PAR.
GAUTENG PUMP PRICE (SA c/l) AS FROM 06/04/2022	2,196.000	2,163.000	-	-	-
WHOLESALE PRICE (SA c/l) AS FROM 06/04/2022	-	-	2,101.440	2,123.840	1,584.688
SINGLE NATIONAL MAXIMUM RETAIL PRICE	-	-	-	-	2,045.000
BASIC FUEL PRICE - 14/04/2022 (SA c/l)	1,233.921	1,219.063	1,494.611	1,508.081	1,424.000
PRESS RELEASE CONTRIBUTION TO BFP 06/04/2022 - 14/04/2022 (SA c/l)	1,278.710	1,255.710	1,402.630	1,425.030	1,363.128
UNIT OVER/(UNDER) RECOVERY - 14/04/2022 (SA c/l)	44.789	36.647	(91.981)	(83.051)	(60.872)
AVERAGE BASIC FUEL PRICE 01/04/2022 - 14/04/2022	1,189.716	1,170.500	1,387.075	1,400.428	1,349.463
AVERAGE UNIT OVER/(UNDER) RECOVERY 01/04/2022 - 14/04/2022	35.462	34.078	(72.945)	(68.698)	(66.135)

ANALYSIS MOVEMENT OF AVERAGE OVER/(UNDER) RECOVERY

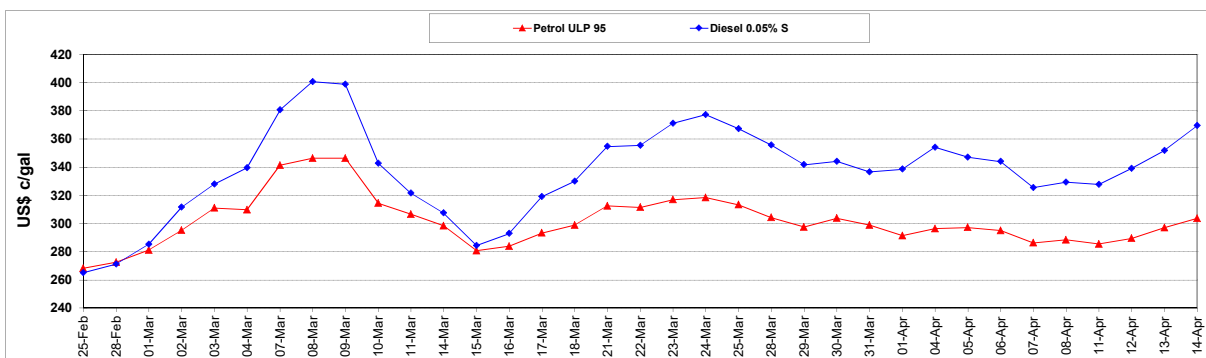
	PETROL 95	PETROL 93	DIESEL 0.05%	DIESEL 0.005%	ILL. PAR.
- MOVEMENT IN INTERNATIONAL PRODUCT PRICES	1.860	1.019	(112.121)	(108.251)	(104.249)
- MOVEMENT IN EXCHANGE RATE	33.602	33.059	39.176	39.553	38.114
AVERAGE UNIT OVER/(UNDER) RECOVERY 01/04/2022 - 14/04/2022	35.462	34.078	(72.945)	(68.698)	(66.135)

R/\$ EXCHANGE RATE - (R/\$14.6458 - 14/04/2022)

EXCHANGE RATE USED IN BASIC FUEL PRICE



INTERNATIONAL PRODUCT PRICES OF BASKET USED IN BASIC FUEL PRICE



BASIC FUEL PRICE IN SA CENTS PER LITRE

